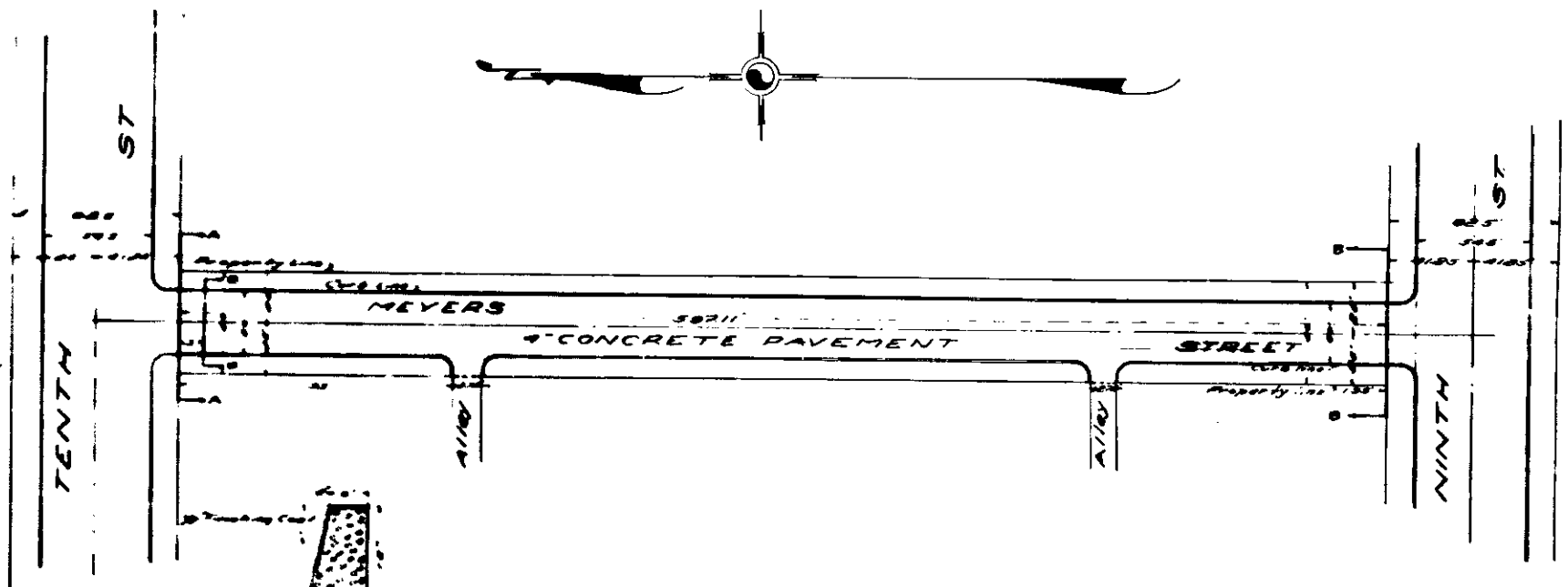


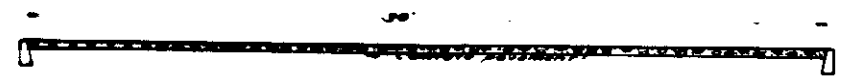
PLAN NO 512  
 FOR THE IMPROVEMENT OF  
**MEYERS STREET**  
 FROM NINTH ST TO TENTH ST  
 IN THE  
 CITY OF SAN BERNARDINO  
 MAY 20 1924

Scale 1"=40'

**LEGEND**  
 1/4" = 10' means 10' of width  
 1/8" = 11' means 11' of width  
 1/16" = 12' means 12' of width  
 1/32" = 13' means 13' of width  
 1/64" = 14' means 14' of width  
 Concrete pavement to be constructed shows this  
 Concrete pavement in section shows this



PLAN AND SECTION OF CURB  
 Scale 1"=1'

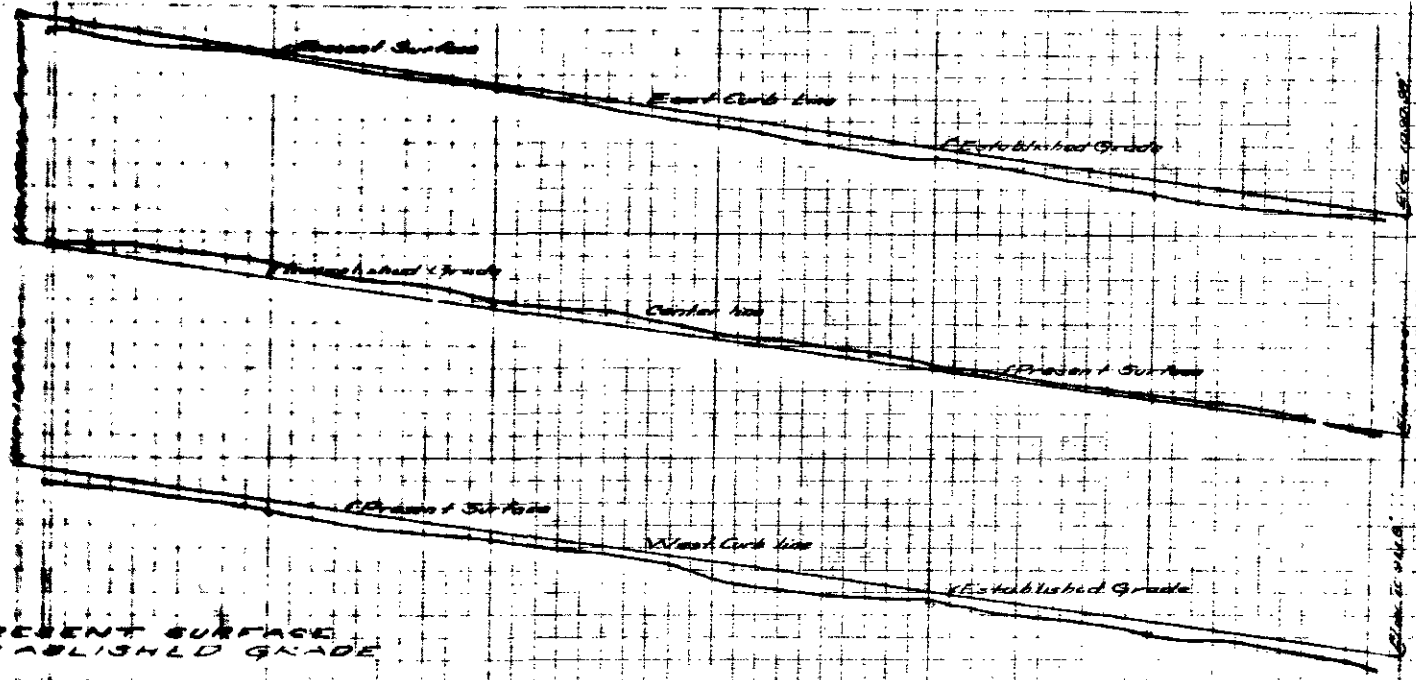


SECTION OF PAVEMENT AT A-A  
 Scale 1"=4'



SECTION OF PAVEMENT AT B-B  
 Scale 1"=4'

All elevations are in feet over mean  
 sea level. In this case the datum is  
 City Bench mark, on which is set by  
 William H. Cook of the City of San Bern.  
 1924

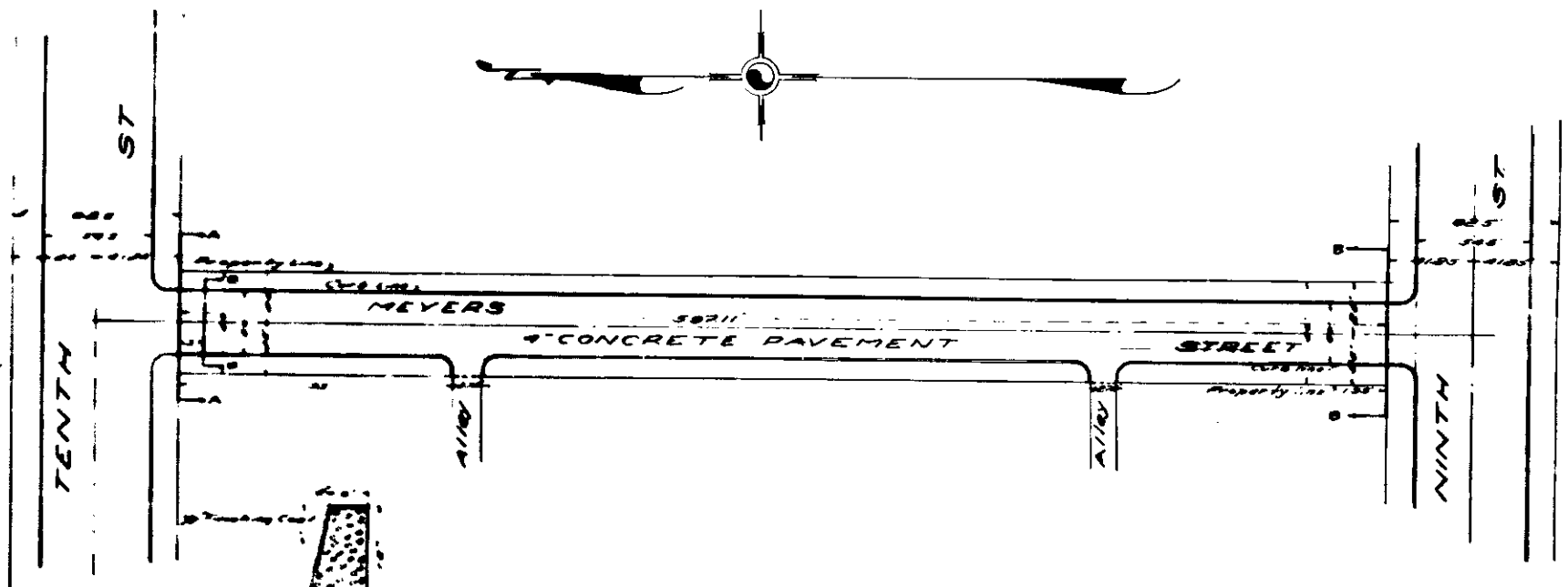


**PROFILE**  
 BLACK LINES SHOW PRESENT SURFACE  
 RED LINES SHOW ESTABLISHED GRADE

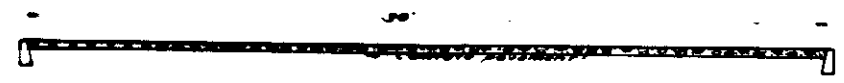
PLAN NO 512  
 FOR THE IMPROVEMENT OF  
**MEYERS STREET**  
 FROM NINTH ST TO TENTH ST  
 IN THE  
 CITY OF SAN BERNARDINO  
 MAY 20 1924

Scale 1"=40'

**LEGEND**  
 1/4" = 10' means 10' or more  
 1/8" = 11' means 11' or less  
 1/16" = 12' means 12' or less  
 1/32" = 13' means 13' or less  
 1/64" = 14' means 14' or less  
 Concrete pavement to be constructed shows this  
 Concrete pavement in section shows this



PLAN AND SECTION OF CURB  
 Scale 1"=1'

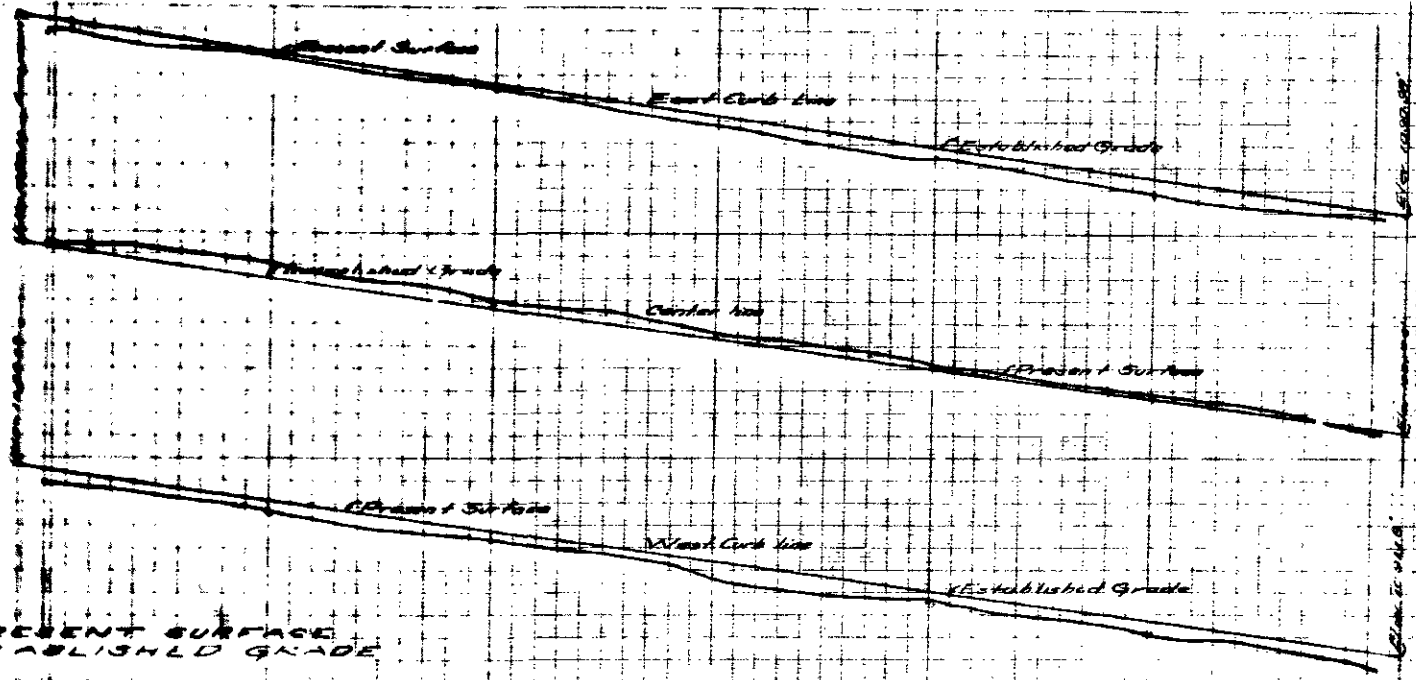


SECTION OF PAVEMENT AT A-A  
 Scale 1"=4'



SECTION OF PAVEMENT AT B-B  
 Scale 1"=4'

All elevations are in feet over mean  
 sea level. In this plan the  
 City of San Bernardino is  
 shown to the east of the  
 street.



**PROFILE**  
 BLACK LINES SHOW PRESENT SURFACE  
 RED LINES SHOW ESTABLISHED GRADE